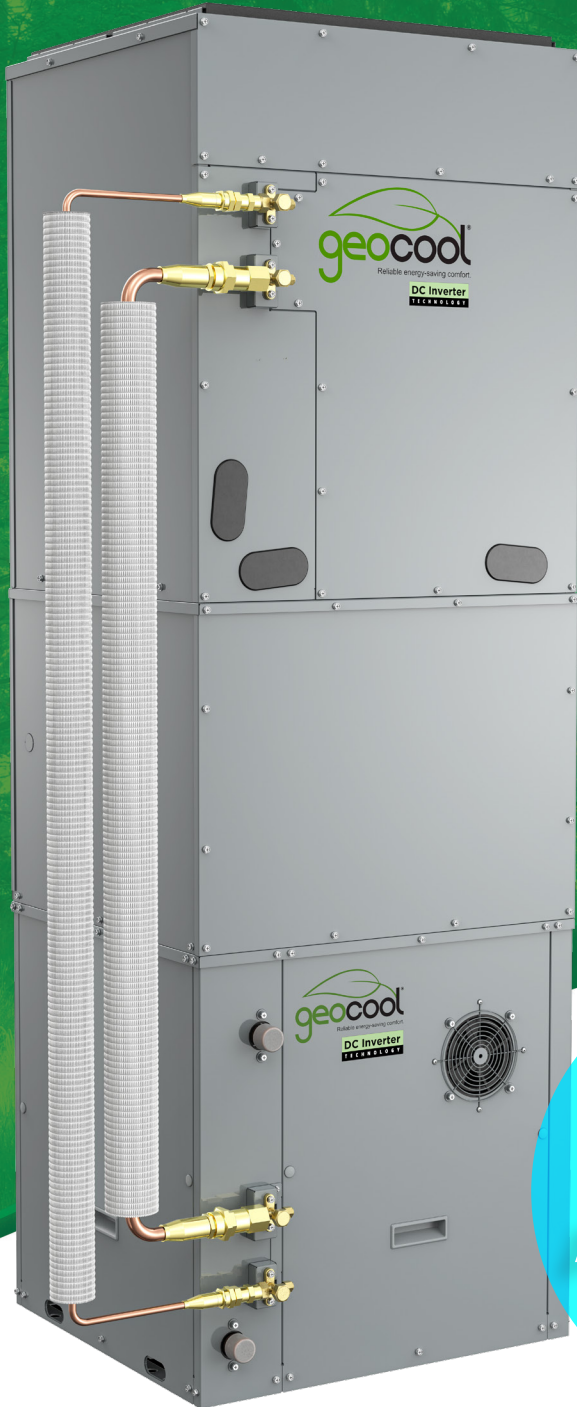


# geocool<sup>®</sup> Inverter Series

Reliable energy-saving comfort.



## Up to 70 EER DC Inverter Geothermal Heat Pump

Embrace comfort with the GeoCool<sup>®</sup> all DC Inverter Technology. Equipped with a high-precision Electronic Expansion Valve, allowing for more accurate temperature control while also keeping the utility bill down.

The flexibility of four independent modules makes it easy to meet the installation requirements of different air outlet methods and applications. Space constraints are less of an issue when a custom built layout is an option!

For a long term solution with lower maintenance costs, design your own GeoCool<sup>®</sup> Inverter Series Geothermal unit.

**NOW  
AVAILABLE!**



- ✓ All DC Inverter
- ✓ High-Precision Electronic Expansion Valve (EEV)
- ✓ Co-Axial Copper-Nickel Coil Heat Exchanger

- ✓ Durable Build & Finish
- ✓ Multi-Position Installation
- ✓ Low Noise



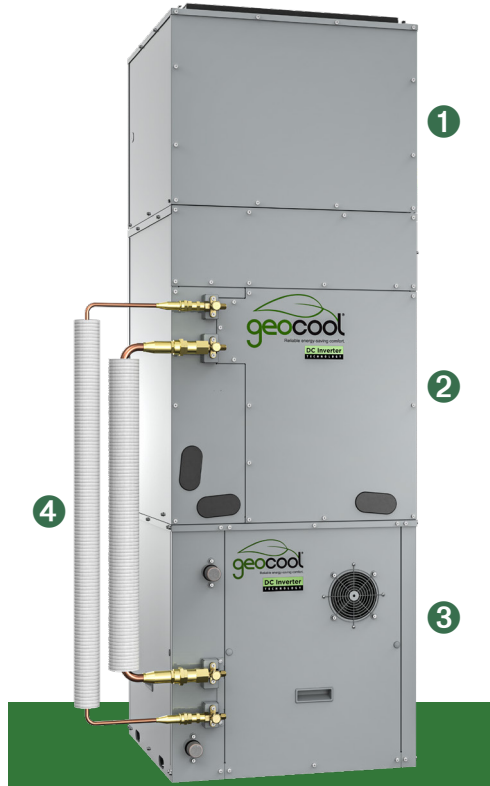
Version Date: 09-27-23

[www.mrcool.com](http://www.mrcool.com)



**GeoCool® Vertical Downflow with pre-charged GeoCool Quick Connect Line Set**

- ❶ A-Coil Module: GCSCAM060GN
- ❷ Blower Module: GCSBLM014
- ❸ Compressor: GCSHPM060IN
- ❹ GeoCool No-Vac Vertical Downflow w/o Air Box 3/8 3/4 Prechg. Lineset: GCNV-VD00-3834



**GeoCool® Vertical Upflow with pre-charged GeoCool Quick Connect Line Set**

- ❶ Blower Module: GCSBLM0141
- ❷ A-Coil Module: GCSCAM060GN
- ❸ Compressor: GCSHPM060IN
- ❹ GeoCool No-Vac Vertical Upflow w/o Air Box 3/8 3/4 Prechg. Lineset: GCNV-VU00-3834



**GeoCool® Vertical Upflow with Return Air Box and pre-charged GeoCool Quick Connect Line Set**

- ❶ Blower Module: GCSBLM0141
- ❷ A-Coil Module: GCSCAM060GN
- ❸ Return Air Box Module: GCSAR048060
- ❹ Compressor: GCSHPM060IN
- ❺ GeoCool No-Vac Vertical Upflow w/ Air Box 3/8 3/4 Prechg. Lineset: GCNV-VUAB-3834

**SPECIFICATIONS\***

\*Specifications are preliminary and subject to change.

MODEL	LOAD	FLUID FLOW (GPM)	OPEN LOOP				CLOSED LOOP					
			AIRFLOW (COOLING CFM)	AIRFLOW (HEATING CFM)	CAPACITY (BTU/HR)	EER	COOLING	HEATING	CAPACITY (BTU/HR)	EER	CAPACITY (BTU/HR)	COP
<b>4 TON COMING SOON</b>	FULL	7.93	1400	1765	50500	27	COOLING	HEATING	46500	18.29	40000	3.4
	PART	7.93	810	1050	13300	70.97	14500	48.79	9800	5.1		
<b>5 TON</b>	FULL	7.93	1400	1765	62000	21.39	COOLING	HEATING	55600	14.4	45000	3.2
	PART	7.93	810	1050	13300	70.97	14500	48.79	9800	5.1		

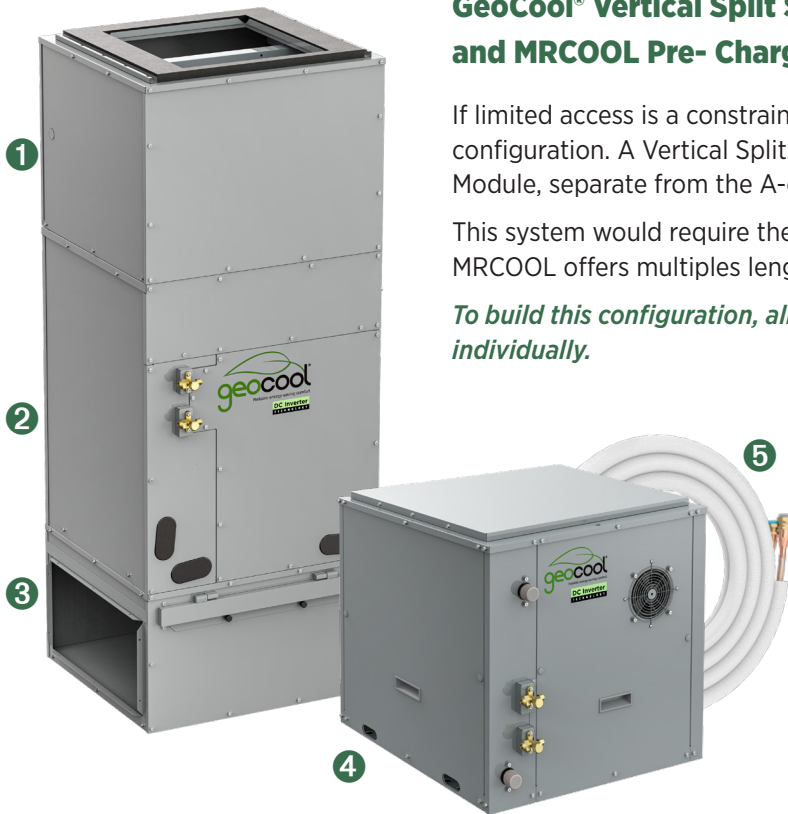
ALL RATINGS BASED ON 208V / 60Hz / 1ph. HEATING CAPACITIES BASED ON 68.0°F DB / 59.0°F WB ENTERING AIR TEMPERATURE. COOLING CAPACITIES BASED ON 80.6°F DB / 66.2°F WB ENTERING AIR TEMPERATURE.

## GeoCool® Vertical Split System with Return Air Box and MRCOOL Pre- Charged Line Set

If limited access is a constraint in your space, a Vertical Split system may be the ideal configuration. A Vertical Split configuration would include a stand-alone Compressor Module, separate from the A-coil Module, Blower Module, and Return Air Box.

This system would require the use of the MRCOOL No-Vac Quick Connect line set. MRCOOL offers multiples lengths for various application requirements.\*

*To build this configuration, all items will need to be selected and purchased individually.*



From top to bottom, this configuration includes the following units:

- ❶ Blower Module: **GCSBLM0141**
- ❷ A-Coil Module: **GCSCAM060GN**
- ❸ Return Air Box Module: **GCSAR048060**
- ❹ Compressor: **GCSHPM060IN**
- ❺ MRCOOL No-Vac Quick Connect line set: **NVXX-3834**

*\*Refer to MRCOOL Pre-Charged Line Sets for selection.*

## GeoCool® Horizontal Split System with MRCOOL Pre-Charged Line Set

If there is limited access to a space, a Horizontal Split system may be the choice. This split configuration would include a stand-alone Compressor Module, separate from the A-coil Module and Blower Module in a horizontal orientation.

This system would require the use of the MRCOOL® No-Vac Quick Connect line set. MRCOOL® offers multiples lengths for various application requirements.\*

*To build this configuration, all items will need to be selected and purchased individually.*

From left to right, this configuration includes the following units:

- ❶ Blower Module: **GCSBLM0141**
- ❷ A-Coil Module: **GCSCAM060GN**
- ❸ Compressor: **GCSHPM060IN**
- ❹ MRCOOL No-Vac Quick Connect line set: **NVXX-3834**

*\*Refer to MRCOOL Pre-Charged Line Sets for selection.*



*\*All modules must be selected individually based on the desired configuration. Currently, there is not a model number for an entire system. The Vertical Upflow (with or without the return air box) and Vertical Downflow configurations have line sets designed for each system. Split Systems will require the user to select and purchase a MRCOOL Universal No-Vac line set based on the distance required for the application.*

*Refer to your dealer to purchase the additional, required accessories to complete a full geothermal system.*



A-Coil Module  
**GCSCAM060GN**

Net Cabinet  
Dimensions:  
A: 24.81" (630mm)  
B: 22.43" (570mm)  
C: 30.87" (785mm)

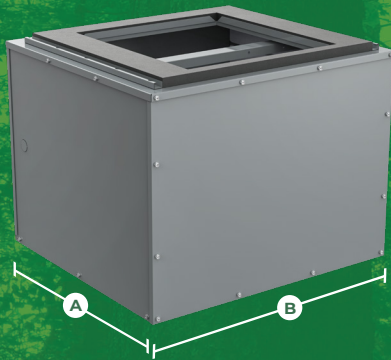
Net Weight:  
**124.58 Lbs (56.5Kg)**



Compressor Module  
**GCSHPM060IN**

Net Cabinet  
Dimensions:  
A: 24.81" (630mm)  
B: 22.44" (570mm)  
C: 25.12" (638mm)

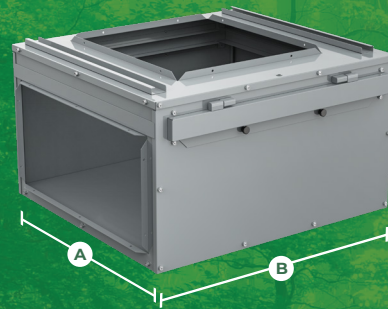
Net Weight:  
**231.53 Lbs (105Kg)**



Blower Module  
**GCSBLM014**

Net Cabinet  
Dimensions:  
A: 24.81" (630mm)  
B: 22.43" (570mm)  
C: 19.12" (485mm)

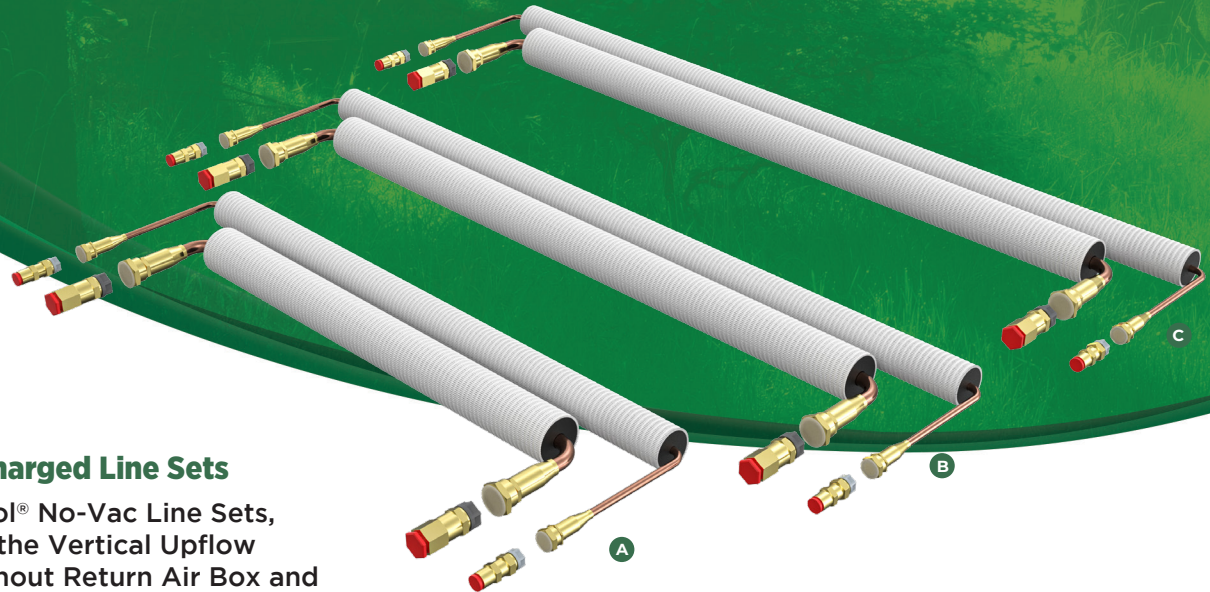
Net Weight:  
**79.38 Lbs (36Kg)**



Return Air Box Module  
**GCSAR048060**

Net Cabinet  
Dimensions:  
A: 24.81" (630mm)  
B: 22.43" (570mm)  
C: 14.56" (370mm)

Net Weight:  
**36.38 Lbs (16.5Kg)**



## GeoCool® No-Vac Pre-Charged Line Sets

The pre-charged, GeoCool® No-Vac Line Sets, designed specifically for the Vertical Upflow configuration with or without Return Air Box and the Vertical Downflow configuration, allow for easy and fast installation.

### **A** GCNV-VU00-3834

Dimensions (LxW):  
**39.195" x 12.55" (995.53 x 319mm)**

Net Weight:  
**5.8 Lbs (2637g)**

### **B** GCNV-VUAB-3834

Dimensions (LxW):  
**53.131" x 12.55" (1349.53 x 319mm)**

Net Weight:  
**6.48 Lbs (29420g)**

### **C** GCNV-VD00-3834

Dimensions (LxW):  
**57.695" x 12.55" (1465.53 x 319mm)**

Net Weight:  
**6.7 Lbs (3040g)**