

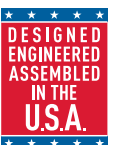
GPD14  
PACKAGED DUAL FUEL UNIT  
ENERGY-EFFICIENT COMPRESSOR  
UP TO 14.5 SEER, 8.0 HSPF, 81% AFUE  
Multi-Position Installation



Thank goodness  
for Goodman.<sup>®</sup>



At Goodman, we believe in American dependability. Units are designed, engineered and assembled in the U.S.A.





Goodman® is one of the biggest names in cooling, heating and energy-efficient home comfort. That's because Goodman lives up to its name in a big way, with time-tested energy-efficient technology, highly-durable materials and spot-on manufacturing. So, no matter where you live or whether your home is small or large, Goodman probably has a solution to help keep your home comfortable.

### Goodman will keep you cool as a cucumber.

The best packaged system is the kind you don't have to worry about. It comes on the moment you need it and then runs quietly and efficiently all year long. The Goodman GPD14 is loaded with features designed to provide outstanding performance for years to come. We use advanced techniques and materials so you know the cozy, even temperature you feel in every corner of your home is an energy-efficient trend that's here to stay for many years.

### Don't let high utility bills make you lose your cool.

Our complete line of packaged systems are priced to help add comfort to your budget from a local independent Goodman dealer. And that's only the beginning. We want you to smile every time you open your utility bill, so we design energy-efficient technology into our units.

### Taking pride in our company heritage.

Goodman brand heating and cooling systems are designed to provide refreshingly affordable and energy-efficient indoor comfort solutions using advanced technology. But the company ultimately adheres to some old-fashioned values, too. Goodman believes in the integrity of the American worker. That's why Goodman brand heating and cooling systems are designed, engineered and assembled in the United States.

Experience reliable indoor comfort for everyone in your home season after season.





## A LOT GOES INTO EVERY GOODMAN® BRAND GPD14 PACKAGED UNIT

### The art of precision

**High-Efficiency Compressor** – Compressor will provide years of reliable cooling comfort. Scroll compressor design has fewer moving parts and uses less energy compared to reciprocating compressors. Uses chlorine-free R-410A refrigerant.

**All-Aluminum Evaporator Coil** – A single metal solution that is designed for enhanced durability and performance (select models).

**Goodman packaged units simply work the way they're supposed to, making each one a thing of beauty.**

**Multi-Speed ECM Blower Motor** – Automatically adjusts airflow to match comfort needs, reduces energy consumption and system noise as compared to single-stage motors.

**Refrigeration-Grade Premium Copper Tubing and Aluminum Fin Condenser Coil Configuration** – Delivers outstanding heat transfer properties.

**Heavy-Gauge Galvanized Steel Enclosure with Powder-Paint Finish** – Protects your system from extreme outdoor elements.

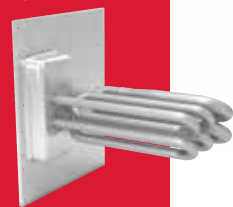
**Fully-Insulated Blower Compartment** – Designed for quiet performance. Panels are conveniently located to provide easy access.

MODEL	SEER	EER	2-4 TON CAPACITY
GPD14	14	12	•

Thank goodness for Goodman.®

### COMPONENT UPGRADE OFFERS BETTER PERFORMANCE

The aluminized steel, tubular primary heat exchanger featured in Goodman brand packaged units is likely the most essential component in a packaged unit's performance. This distinctive heat exchanger employs wrinkle-bend technology which was developed to deliver extraordinary durability and long-term reliability.



### DUAL FUELS EQUAL DUAL SAVINGS

When properly installed and configured, a dual fuel packaged heat pump system can determine whether it's more economical to heat your home using electricity or natural gas. The GPD14 dual fuel packaged system offers an incredible combination of indoor comfort and energy-efficient performance every month of the year.

When the thermostat calls for cooling performance, the heat pump in this unit functions just like a central air conditioner keeping you cool and comfortable even on the hottest days of summer. In the months when you need moderate heating output, the heat pump automatically reverses the refrigerant flow to provide warm air in your home. And on the coldest days of winter, the gas furnace in this packaged unit provides reliable, consistent heat.



## COUNT ON OUTSTANDING LIMITED WARRANTY\* PROTECTION

---

**20** HEAT EXCHANGER LIMITED WARRANTY\*

**10** PARTS LIMITED WARRANTY\*

\* Complete warranty details available from your local dealer or at [www.goodmanmfg.com](http://www.goodmanmfg.com). To receive the 20-Year Heat Exchanger Limited Warranty and 10-Year Parts Limited Warranty, online registration must be completed within 60 days of installation. Online registration is not required in California or Quebec.

---

When your current packaged unit breaks, it's good to know that your local, independent Goodman® brand contractor has financing options available to help defray what might be considered an emergency purchase for your home.

### PERFORMANCE

---

UP TO  
**14.5**  
SEER

**8.0**  
HSPF

UP TO  
**81%**  
AFUE

The 81% AFUE rating on this packaged unit means that 81 cents of every energy dollar warms your home. The Department of Energy (DOE) established the AFUE (Annual Fuel Utilization Efficiency) system to calculate the annual operating cost of residential packaged units.

---

Independent, dependable, courteous, prompt, honest, highly-skilled and respectful of you and your home. That's why all the time homeowners say,

"These guys are good – really good."



## Why does Goodman® have such a large fan base?

Many of your neighbors may have discovered that a reliable and energy-efficient home comfort system doesn't have to cost a fortune. Goodman brand whole-house systems feature many of the latest and greatest money-saving technology benefits that we can offer. They are designed and engineered to run quietly and pretty much worry-free.

---

### EXTENDED SERVICE PLANS AVAILABLE

For even greater peace of mind, ask your dealer or visit our website at [www.goodmanmfg.com](http://www.goodmanmfg.com) for more details about Asure<sup>SM</sup>, an affordable Parts and/or Labor Extended Service Plan for your entire Goodman® brand HVAC system.†

**Asure**<sup>SM</sup>  
EXTENDED SERVICE PLAN<sup>†</sup>

† Extended Service Plans not available in all states. Ask your dealer for full details.



ONCE YOU CHOOSE THE GOODMAN® BRAND,  
YOU'LL PROBABLY BE A FAN FOR LIFE.



Millions of homeowners across North America are big fans already.  
**YOU COULD BECOME ONE, TOO!**

Just go to [www.goodmanmfg.com/reviews](http://www.goodmanmfg.com/reviews)  
and find out why you'll say "Thank goodness for Goodman®."



## GOODMAN — A MEMBER OF DAIKIN GROUP

Daikin Industries, Ltd. (DIL) is a global Fortune 1000 company. It is a worldwide leader for residential and commercial HVAC. DIL is engaged primarily in the development, manufacture, sale, and aftermarket support of heating, ventilation, air conditioning and refrigeration equipment, refrigerants and other chemicals, as well as oil hydraulic products. DIL is headquartered in Osaka, Japan.

The company provides innovative, premium quality indoor climate management solutions to meet the changing needs of residential, commercial, and industrial customers.



### Additional Information

Before purchasing this appliance, read important information about its estimated annual energy consumption, yearly operating cost, or energy efficiency rating that is available from your retailer.



a member of **DAIKIN** group

Our continuing commitment to quality products may mean a change in specifications without notice.  
© 2017 Goodman Manufacturing Company, L.P.  
Houston, Texas · USA · [www.goodmanmfg.com](http://www.goodmanmfg.com)

CB-GPD14 01-17

